

R454b Refrigerant

SUBMITTAL DATA SHEET



Series Name: Extreme Heat AHU Series
Model Number: MAUSE-H48B-2A/MO1HE-H48B-2A

Air Handler Heat Pump System

Location:	Approval:
Engineer:	Date:
Submitted to:	Construction:
Submitted by:	Unit #:
Reference:	Drawing #:



INDOOR SPECIFICATION

ESP(inWG)	0~0.8
Indoor Air Flow (Turbo/H/M/L/Si) (CFM)	1601 / 1442 / 1265 / 1089 / 1089
Indoor Noise Level (Turbo/H/M/L/Si) (dBA)	53 / 53 / 49.5 / 33.5 / 33.5
Dimension (W×D×H)	inch 21-1/2 x 21-1/2 x 60-1/8 mm 546 x 546 x 1526
Package (W×D×H)	inch 25 x 31-1/8 x 70-3/4 mm 635 x 790 x 1800
Net/Gross Weight	lbs 187 / 232 kg 84.6 / 105.3

OUTDOOR SPECIFICATION

Compressor Type	ROTARY
Compressor Model	MTH550UKPC8FU
Refrigerant	R454B
Refrigerant Oil Charge(mL)	1,800
Refrigerant Oil	HAF68D1C
Outdoor Air Flow (Max) (CFM)	3,037
Outdoor Noise Level (dBA)	65
Dimension (W×D×H)	inch 38-9/16 x 16-3/8 x 38-3/8 mm 980 x 415 x 975
Package (W×D×H)	inch 45-1/16 x 19-11/16 x 42-1/2 mm 1145 x 500 x 1080
Net/Gross Weight	lbs 233 / 202 kg 105.5 / 91.4

EFFICIENCY

Cooling		Heating	
SEER2	17.5	HSPF2-4	9.5
EER2	12.0	COP	3.28

PERFORMANCE of Cooling

Cooling (Btu/hr)	
Rated Capacity	48,000
Min/Max Capacity	18,000 ~ 52,000
Moisture Removal(L/h)	4.94
Standard Operating Range(*F/*C)	-22~122(-30 ~ 50)
Rated Cooling Conditions:	Indoor: 80°F DB/67°F WB Outdoor: 95°F DB/75°F WB

PERFORMANCE of Heating

Heating (Btu/hr)	
1. @ 47°F Rated	48,000
2. @ 47°F Min/Max Capacity	13,500 ~ 52,000
3. @ 17°F Rated	34,000
4. @ 5°F Rated: Capacity / COP	48,000 / 2
5. @ 5°F Max: Capacity	48,000
Standard Operating Range(*F/*C)	-22~75 (-30 ~ 24)
1. Rated Heating Conditions:	Indoor: 70°F DB/60°F WB Outdoor: 47°F DB/43°F WB
2. Rated Heating Conditions:	Indoor: 70°F DB/60°F WB Outdoor: 17°F DB/15°F WB
3. Heating Conditions, Compressor Operating at Max. Frequency	Indoor: 70°F DB/60°F WB Outdoor: 5°F DB/5°F WB

ELECTRICAL

Indoor Power Supply	115/208/230V, 60Hz, 1Ph
Indoor MCA 115V/(208/230V)	14.5/10
Indoor MOP	15.0
Outdoor Power Supply	208/230V, 60Hz, 1Ph
Outdoor MCA	38.0
Outdoor MOP	40.0
Communication Wiring	AWG 20/2
Compressor RLA	28.0
Outdoor Fan Motor RLA	2.0
Outdoor Fan Motor W	250
Indoor Fan Motor RLA	8.0
Indoor Fan Motor W	1000
System Power Input @ Cooling (W)	4,000 (1,300 ~ 4,870)
System Power Input @ Heating (W)	4,290 (925 ~ 3,880)
MCA: Min. circuit amps (A)	MOCP: Max. over current protection (A)
RLA: Rated load amps (A)	W: Fan motor rated output (W)

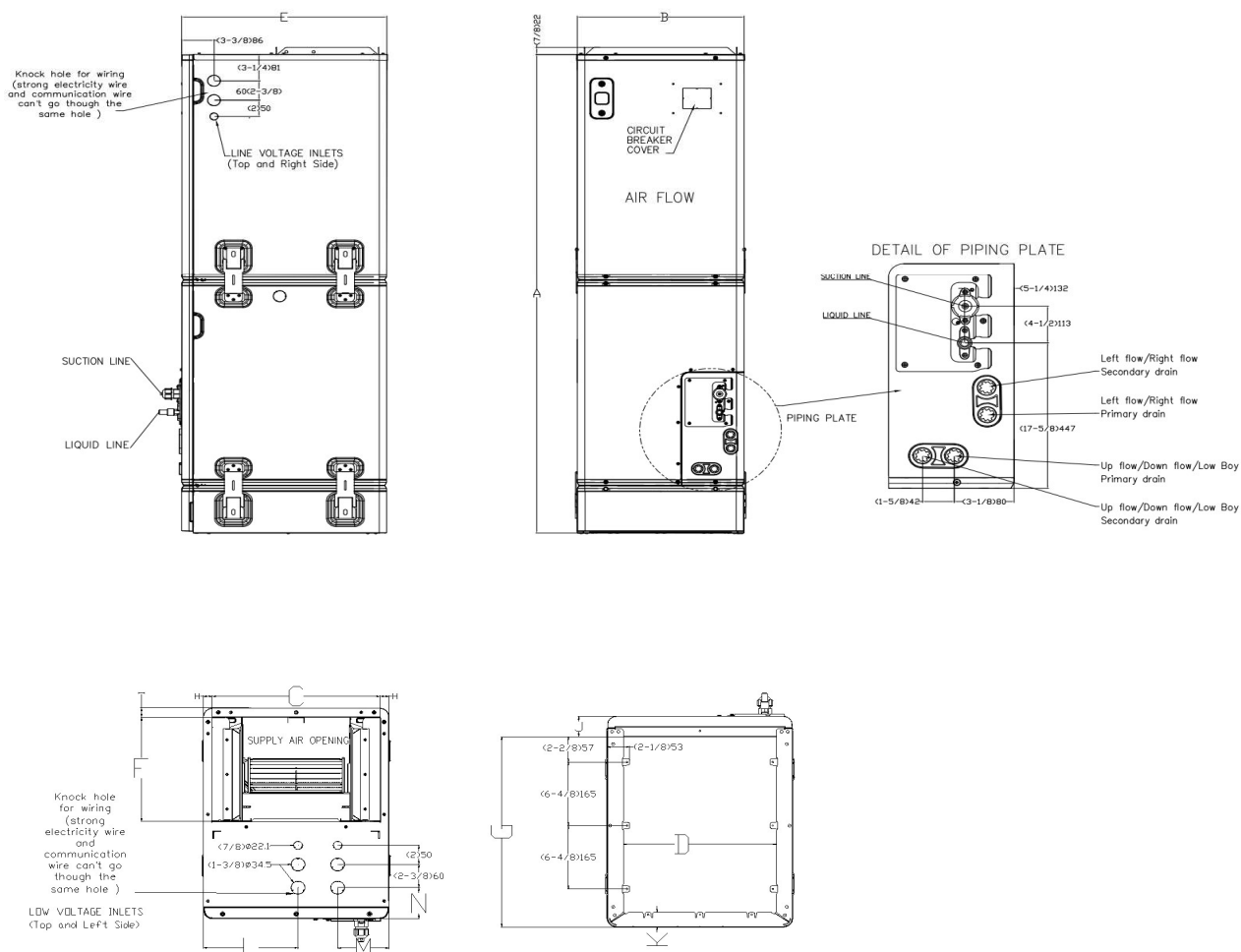
PIPING

Throttle type(Indoor)	EXV
Throttle type(Outdoor)	EXV
Liquid Size	3/8" (9.52mm)
Gas Size	3/4" (19mm)
Max. Piping Length(ft/m)	246 (75)
Max. Height Difference(ft/m)	98 (30)
Max. Pre-charged Length(ft/m)	25 (7.5)
Refrigerant Pre-charged Amount(oz/kg)*	134 (3.8)
Additional Charge of Refrigerant(oz/ft)/(g/m)	0.7 (65)
Connection Method	Flared

* When MO1HE-H48B-2A is paired with MAUSE-H48B-2A, an additional 0.65kg/22.93oz of refrigerant is required.

Indoor Unit Dimension

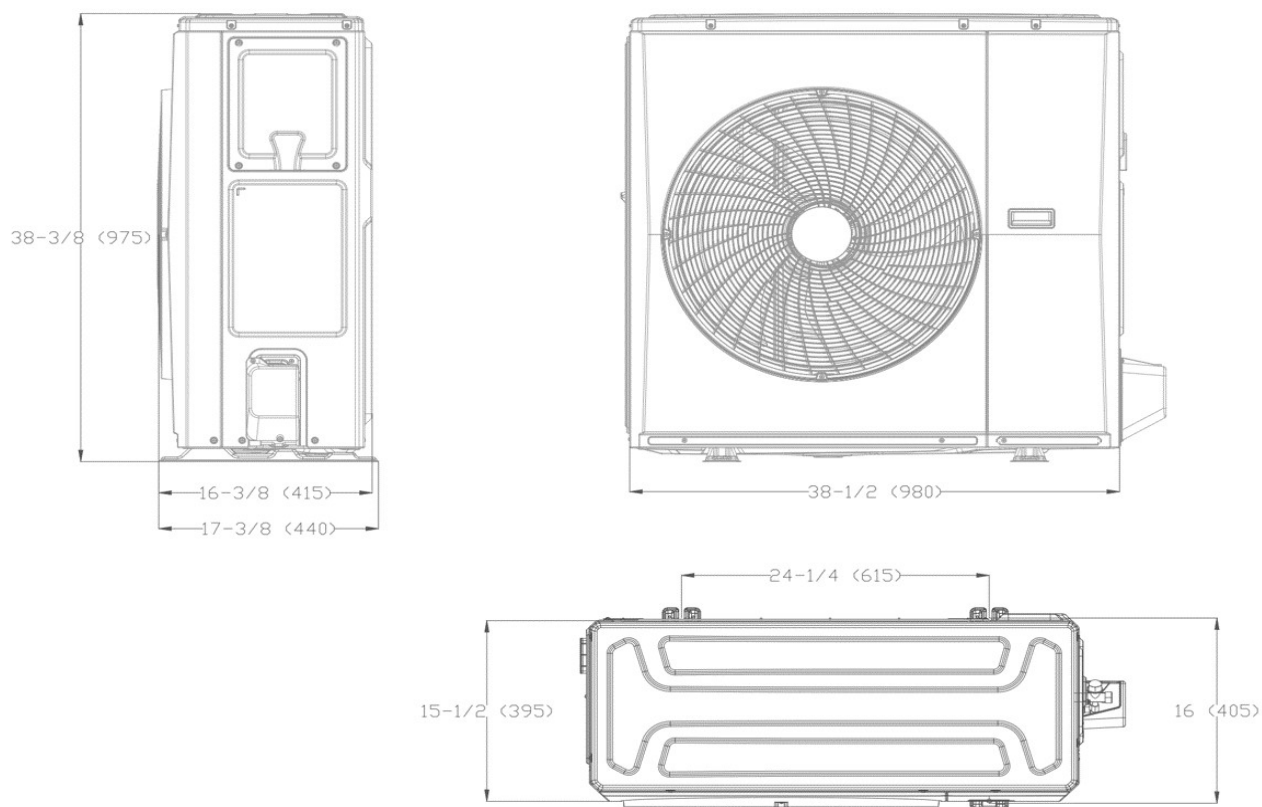
Unit: inch, mm



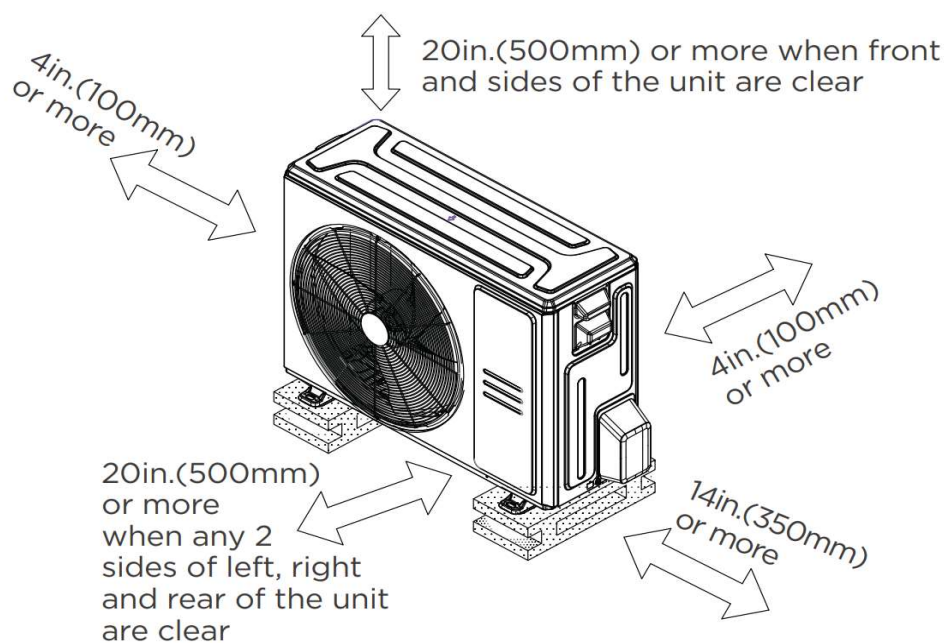
Dimensions		Model(Btu/h)		18K/24K		30K/36K		48K/54K	
				inch	mm	inch	mm	inch	mm
A	Model Height			53-7/8	1368	58-1/8	1476	60-1/8	1526
B	Model Width			14-4/8	368	17-4/8	445	21-4/8	546
C	Supply Air Opening Width			12-7/8	328	16	405	19-7/8	506
D	Return Air Opening Width			11-1/8	282	14-4/8	368	18-4/8	470
E	Model Depth			21-1/2	546	21-1/2	546	21-1/2	546
F	Supply Air Opening Depth			10-5/8	271	10-5/8	271	10-5/8	271
G	Return Air Opening Depth			19	484	19	484	19	484
H	Supply Air Opening Clearance			7/8	22	7/8	22	7/8	22
I	Supply Air Opening Clearance			1	24	1	24	1	24
J	Return Air Opening Front Clearance			2-4/8	62	2-4/8	62	2-4/8	62
K	Return Air Opening Back Clearance			1-4/8	37	1-4/8	37	1-4/8	37
L	Top cover knock hole			/	/	9	229	10-7/8	275
M	Top cover knock hole			4-1/2	113	4-7/8	124	5-1/8	131
N	Top cover knock hole			2	51	2	51	1-5/8	41

Outdoor Unit Dimension

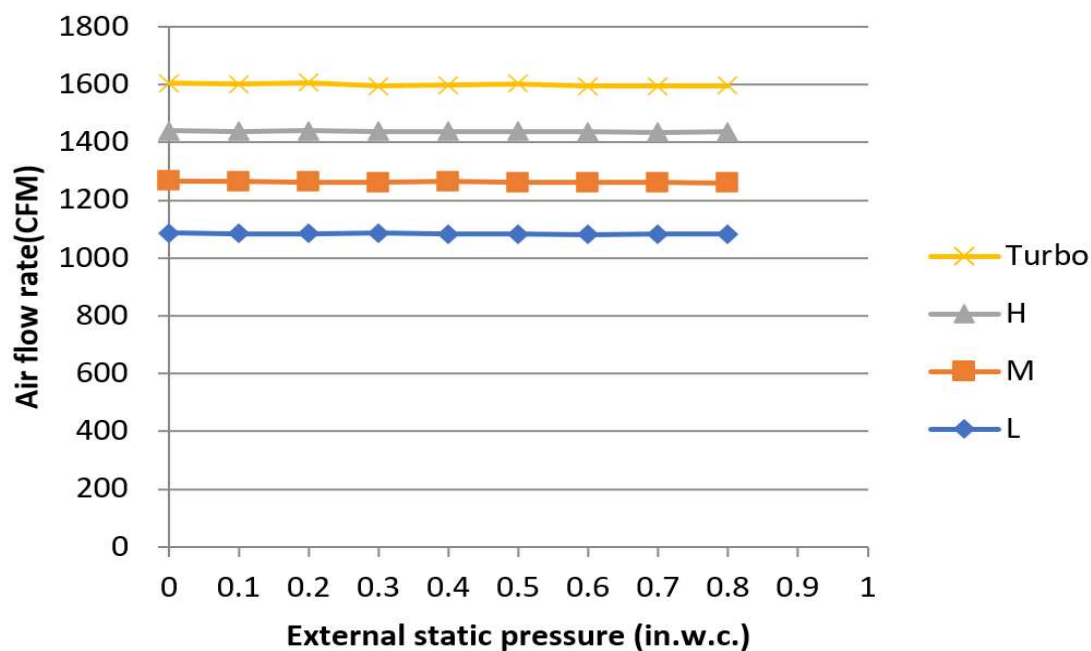
Unit: inch (mm)



Installation Instruction For Outdoor Unit



Fan Performance For Indoor Unit



Features

- Multi-position installation: horizontal(left or right), vertical(up or down)
- The IDU supports 115/230V voltage compatibility
- Aluminum Coil
- Constant Air Flow system: Up to 1.0 In.W.C.
- Optional Auxiliary heat kit up to 25kW
- Easy Maintenance
- Multiple control options available:
 - Two-way communication wired controller with built-in Wi-Fi: 120N (X6W)
 - Wireless remote controller
 - Third-Party 24V Thermostat
- Adaptive Control System
- High efficiency up to 19 SEER2, 12.5 EER2, 10.8 HSPF2
- 100% heating output down to -13°F*
- Base pan heater and crankcase heater are equipped as standard

* When MAUSE-H36B-2A is paired with MO1SE-H36B-2A, its rated heating capacity at -13°F is 100%